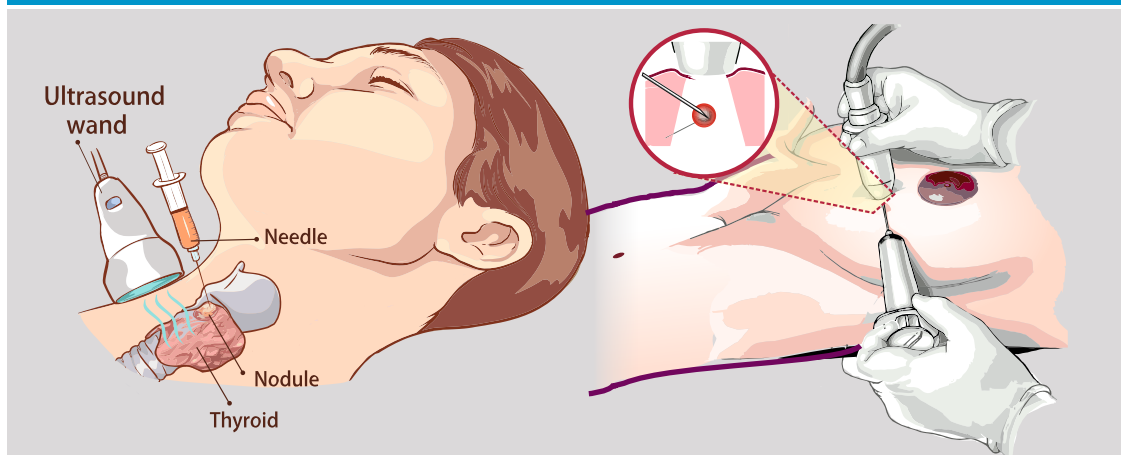


CORE BIOPSY

A procedure where a needle is passed through the skin to obtain a sample of tissue from a mass or lump & examined under a microscope for any abnormalities.



1. Carry the doctor's prescription and come to the procedure room in the Oncology department.
2. Inform your doctor if you are on blood thinners / cardiac medicines.
3. No dietary or food restrictions before the procedure. Eat well before procedure.
4. Consent will be taken.
5. An invasive procedure that usually takes about 20 minutes and may cause slight pain / discomfort.
6. You are settled comfortably in an area and the site of biopsy is exposed and the rest of the body is covered with a bed sheet / blanket.
7. Doctor disinfects the site, administer local anaesthesia and does procedure with automated gun.
8. Post Procedure, the site will be disinfected with antiseptic solution and band aid will be applied to the site which can be removed after few hours.
9. Rest for 5 minutes, you may be advised pain killers.
10. Reports will be available within <1 to 4 days> and can be collected from the <Oncology / Lab> Department.