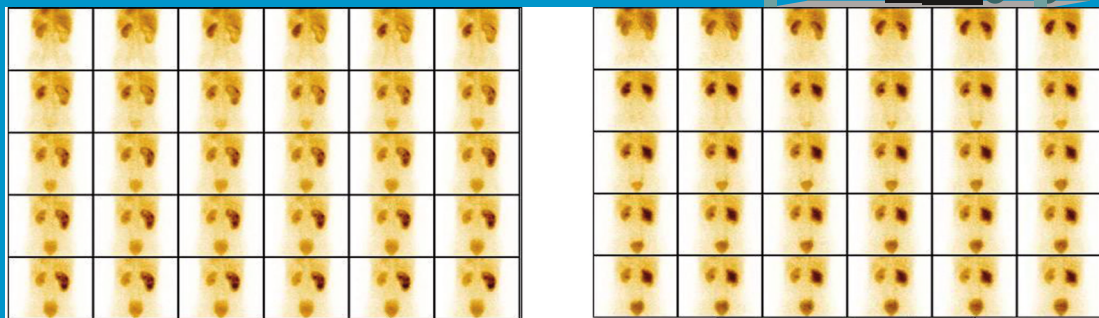
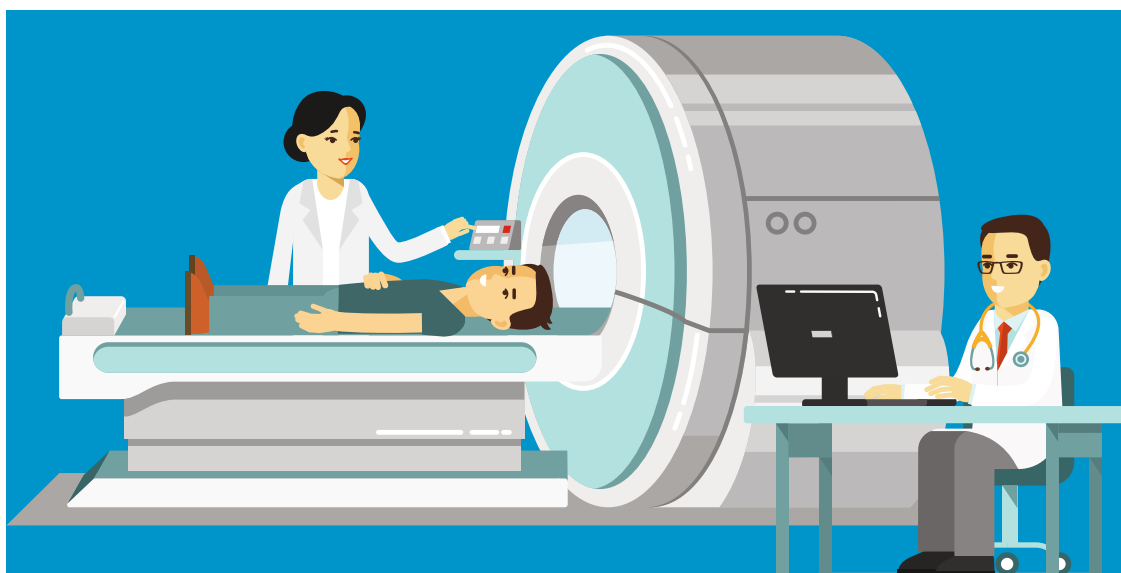


RENAL SCAN – DTPA & EC



1. No fasting required
2. Encouraged to drink lot of fluids before and after the study
3. In case of pediatric patients, they will be sent to the pediatric emergency department to put the IV cannula.
4. Small dose of radioactive injection is given IV and initial images are acquired for 30mins. Many patients may require a delayed Images after 2 hours(will be decided by the doctor after seeing the initial scan)
5. Please inform the attending staff in case you are pregnant
6. Reports will be issued the same day