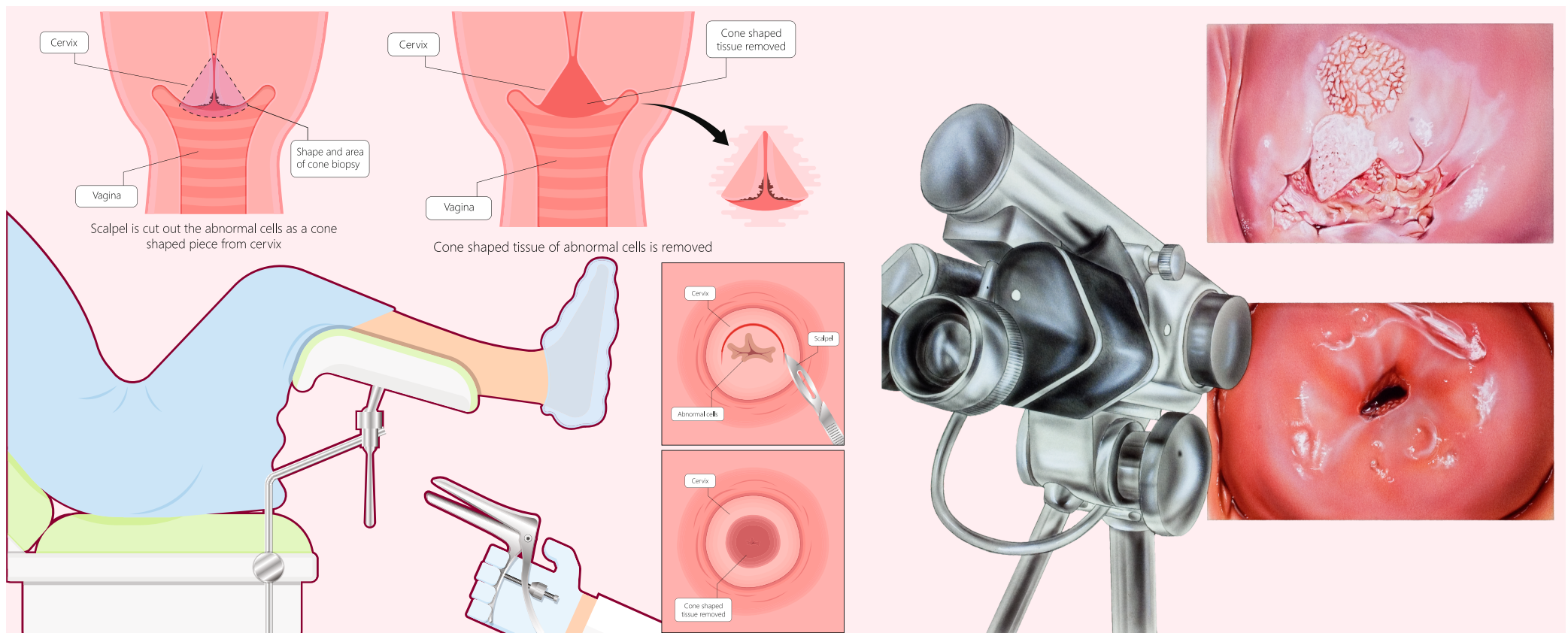


COLPOSCOPY



Overview:

Colposcopy is a diagnostic procedure in which a colposcope (a dissecting microscope with various magnification lenses) is used to provide an illuminated magnified view of the cervix, vagina, vulva or anus to identify precancerous and cancerous lesions so that they may be treated early.

Pre Preparation:

- Before the procedure, you should not apply anything in the vagina, like creams, douches etc.
- Please carry a sanitary napkin as you may experience spotting or slight bleeding, post procedure.
- Please wear comfortable loose clothing.
- You must inform your doctor if you are on blood thinners as these can increase bleeding if you have a biopsy during the colposcopy.
- If you know or think you could be pregnant, inform your doctor.

During Procedure:

- You are settled comfortably in an area where your privacy is respected throughout the procedure.
- Colposcopy is performed similar to a routine pelvic examination, while you lie on an examination table.
- Anaesthesia is not usually administered before the biopsy because the procedure causes only mild discomfort or cramping.
- During Colposcopy, the doctor applies various chemical agents on the cervix and vaginal area. Depending on the changes in the colour of the cells, biopsy may be taken from the abnormal areas. You may experience some burning or tingling sensation for a few seconds when the chemicals are applied.
- The tissue sample is then sent to a laboratory for examination.

- In case you also have a biopsy of your cervix, you may have slight vaginal bleeding after the colposcopy.

Post Procedure:

- In majority of the cases, you will be able to return to normal daily activities immediately after a colposcopy. You may have mild pain, spotting or cramping, which usually goes away within 1 or 2 hours or in certain cases may last for 2 days, in which case you may have to use a sanitary napkin to avoid staining.
- There are no dietary restrictions.
- Do not use any vaginal creams, douches, tampons etc and abstain from sex for 48 hours after the procedure.
- You must immediately come back to us if you have any of the following signs and symptoms:
 1. Heavy vaginal bleeding for more than 7 days.
 2. Foul smelling vaginal discharge, but remember that brown/black, coffee ground discharge is normal for the first few days after the procedure.
 3. Pelvic pains or cramps that do not improve with painkillers.
 4. Temperature greater than 100.4 degrees F or 38 degrees C.
- Review Biopsy report in 3-4 days.