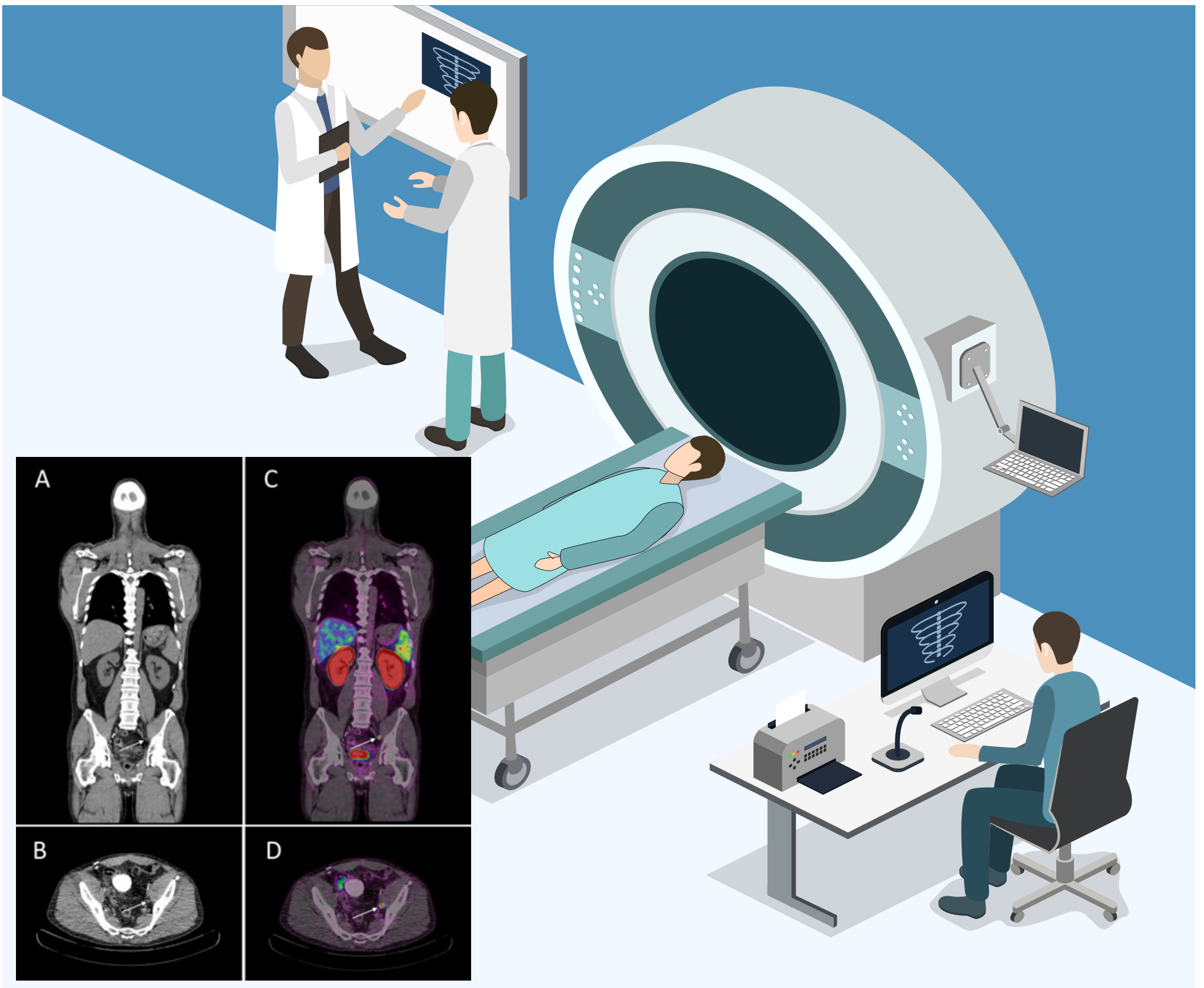


PSMA-PET-CT SCAN INSTRUCTIONS



- Fasting of minimum 2 hours.
- Small dose of radioactive injection is given IV and whole body scan will be done one hour later. Please report to the attending nurse/technologist/physician in case of any previous history of contrast allergy
- The initial part of the scan is a diagnostic CT wherein IV contrast is given, followed by PET imaging. The approximate duration of the scan is about 10-12 mins.
- Blood test (S.Creatinine) is a mandatory requirement prior to this scan if the doctor has advised for a contrast CT (test should not be later than 2 months)
- Requested to bring all prior reports/old CD's
- Requested to stay away from pregnant women for a day
- Please inform the attending staff in case you are pregnant
- Reports will be issued the next day