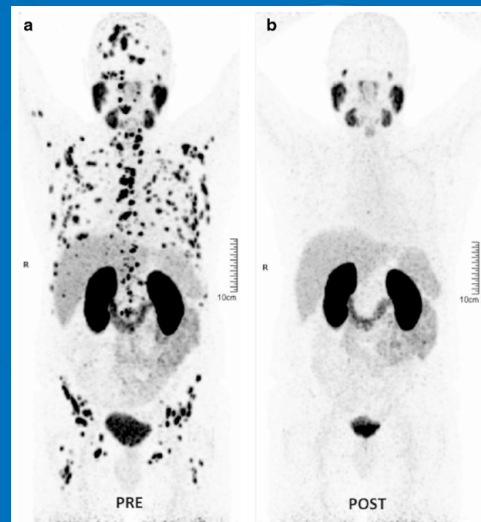


LUTETIUM 177 PSMA & DOTA THERAPY



Overview:

177Lu-DOTATATE / 177Lu-PSMA Therapy is a molecular therapy, also called radioisotope therapy used to treat Neuro Endocrine Tumour or NET.

Pre Procedure:

- You must inform the doctor of any history of allergy or asthma and your medical history as well.
- Please carry your past scan reports / CDs.
- If you know or think you could be pregnant, inform your doctor.
- This treatment is done as a day care outpatient procedure; in rare cases a patient may need to stay overnight as a precaution.

During Procedure:

- You are settled comfortably in the day care isolation bed, where your privacy is respected throughout the procedure. You will be given a hospital gown to change into.
- You will have to take off all ornaments, metallic accessories and inner wear with metal wires etc.
- Nurse and technologist will give you instructions about the procedure, diet instructions etc. and then obtain a consent from you.
- IV cannula is inserted by the nurse, through which the medicine will be infused.
- Pre-medication will be given before the procedure to avoid allergy or nausea during the infusion.
- For 177Lu-DOTATATE Therapy, the session begins with infusion of an amino acid solution. This solution is delivered intravenously to protect the kidneys from the effects of the treatment. The radioisotope is then infused which takes approximately 20 to 30 minutes followed by infusion of additional amino acid solution. In total, the treatment session lasts approximately for 4 to 5 hours.

- For 177Lu-PSMA Therapy, instead of amino acid solution, normal saline is infused before and after infusing the radioisotope.
- During the procedure, relatives / attendants are not allowed in the isolation room. They can see you from outside the room for 2 minutes every hour. Pregnant women / children will not be allowed.
- Nurse will assist you to order food / beverages from our dietary department.
- You must drink plenty of water during this isolation period and void urine frequently.
- For anything that is required, you can call the nurse by dialling the extension from the telephone in the room.
- Doctor will review and decide if you can be discharged after the therapy or need to be kept on observation overnight.
- Whole body scan is done the next day morning, to see where the injected radio peptide has travelled in the body. This usually takes around 10 minutes.
- Doctor reviews the scan image and explains the follow up instructions / plan for the next cycle.

Post Procedure:

- You must drink plenty of water for a week, which is essential to flush out the remaining radioactive medicine in the body.
- You must stay away from pregnant women and children for a week, to avoid radioactive exposure.
- There are no dietary restrictions post the procedure and you may resume all normal activities too.