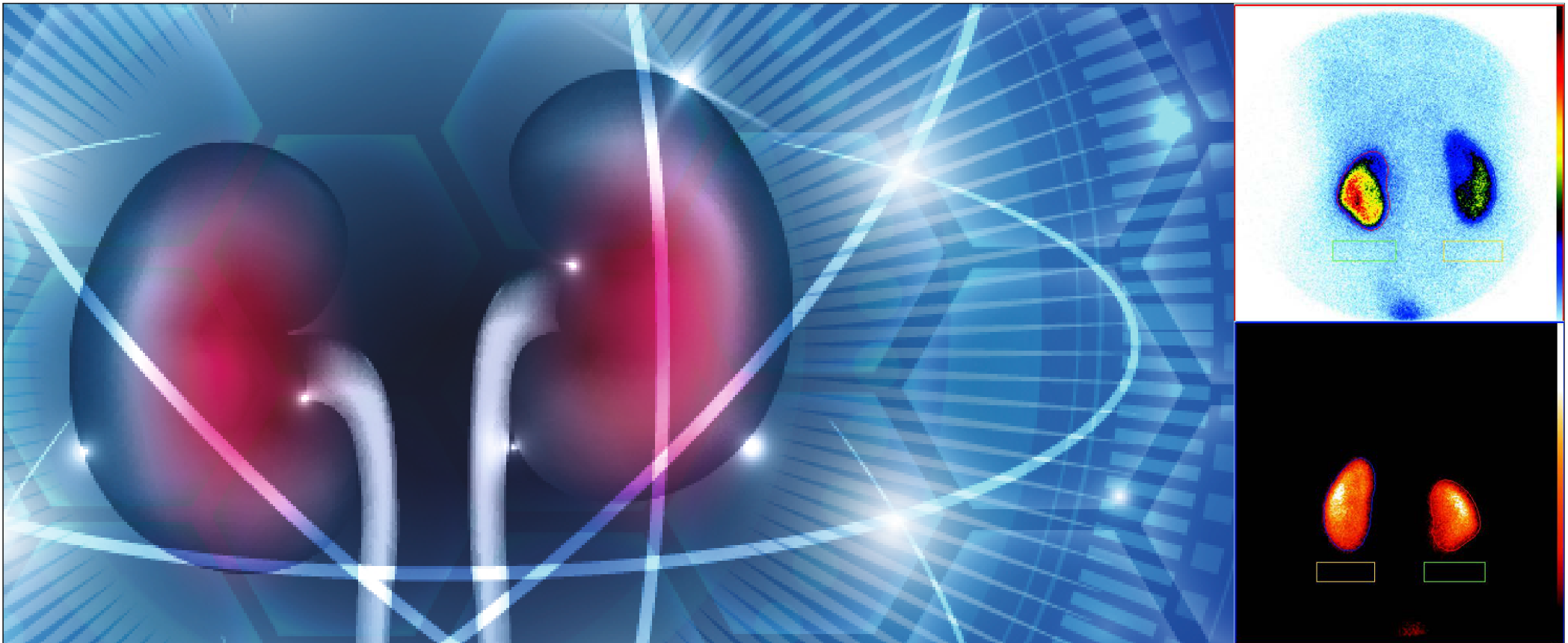




RENAL SCAN - DMSA INSTRUCTIONS



Overview:

DMSA Renal Scan or Dimercaptosuccinic Acid Renal Scan is a nuclear medicine test that gives doctors detailed pictures of how the kidneys look and how they are functioning.

Pre Procedure:

- There are no dietary restrictions before the procedure, unless sedation has been prescribed by doctor.
- You must drink lot of fluids (approximately 1 litre) and have food before the study.
- Wear comfortable, loose-fitting clothes on the day of the test.
- If you know or think you could be pregnant, inform your doctor.
- Please inform the doctor if you are breastfeeding.

During Procedure:

- A Nuclear Medicine technologist will inject a tiny amount of radio-active medicine via an injection on the hand.
- For children below 2 years of age, the radio-active medicine is administered via an intravenous (IV) line in the hand.
- You will have to wait in the Nuclear Medicine Department for the next 2 to 3 hours. It takes 2 to 3 hours for the radio-active medicine to be absorbed by the kidneys.
- You must drink enough water to remain well hydrated. You will also be asked to empty your bladder before the scan.
- After about 2 to 3 hours, when the radio-active

medicine has been absorbed, detailed pictures of the size, shape and position of the kidneys will be taken.

- You will be required to lie down on the procedure table.
- During the scan, the gamma camera will either move over your body or stay in one position, but will not touch you at any point. It is important to remain as still as possible during the scanning, as movement will affect the clarity of the images.
- The scanning procedure is painless and will take about 15 minutes.
- The entire procedure will take 3 hours approximately.

Post Procedure:

- There are no dietary restrictions and you may resume normal activities.
- You must drink 2 to 3 litres of water for the next 24 hours to flush out any traces of radioactive medicine from the body.
- You must stay away from pregnant women and children for 24 hours in order to avoid radioactive exposure.
- For lactating mothers, you must feed your baby after 24 hours.
- Reports will be available within 24 hours.



RENAL SCAN - DMSA INSTRUCTIONS



- No fasting required
- In case of pediatric patients, they will be sent to the pediatric emergency department to put the IV Cannula
- Small dose of radioactive injection is given IV and scan will be done 2-3 hours later. The duration of scan is about 20mins
- Please inform the attending staff in case you are pregnant(all women in child bearing age)
- Reports will be issued the same day