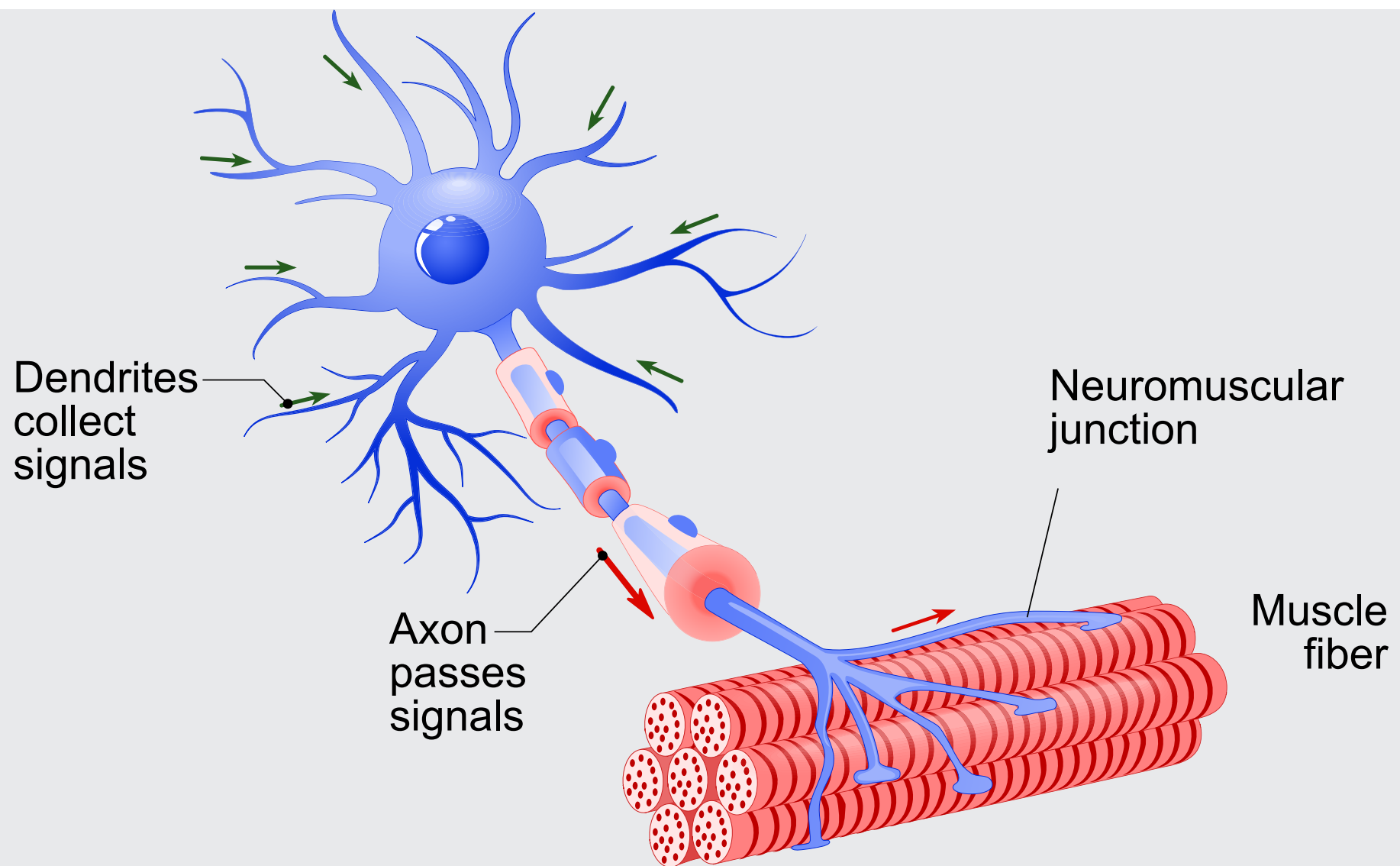




ELECTROMYOGRAPHY-EMG



Overview:

EMG or Electromyography is an invasive diagnostic procedure to assess the health of muscles and the nerve cells that control them (motor neurons). EMG results can reveal nerve dysfunction, muscle dysfunction or problems with nerve-to-muscle signal transmission.

Pre Procedure:

- Please inform your doctor if you are on blood thinners or have a history of bleeding tendencies.

During Procedure:

- The procedure takes around 1 to 2 hours depending upon the number of muscles to be tested.
- During the procedure, a small, thin needle electrode is inserted into several muscles to look for the disease, while electrographic readings will be taken.

- You may feel slight pain or minor bleeding around the electrode insertion point during the test.

Post Procedure:

- There are no long lasting side effects of this procedure.
- You may resume daily routine activities, post the procedure.
- Reports will be issued in one hour, post procedure, at the reception.