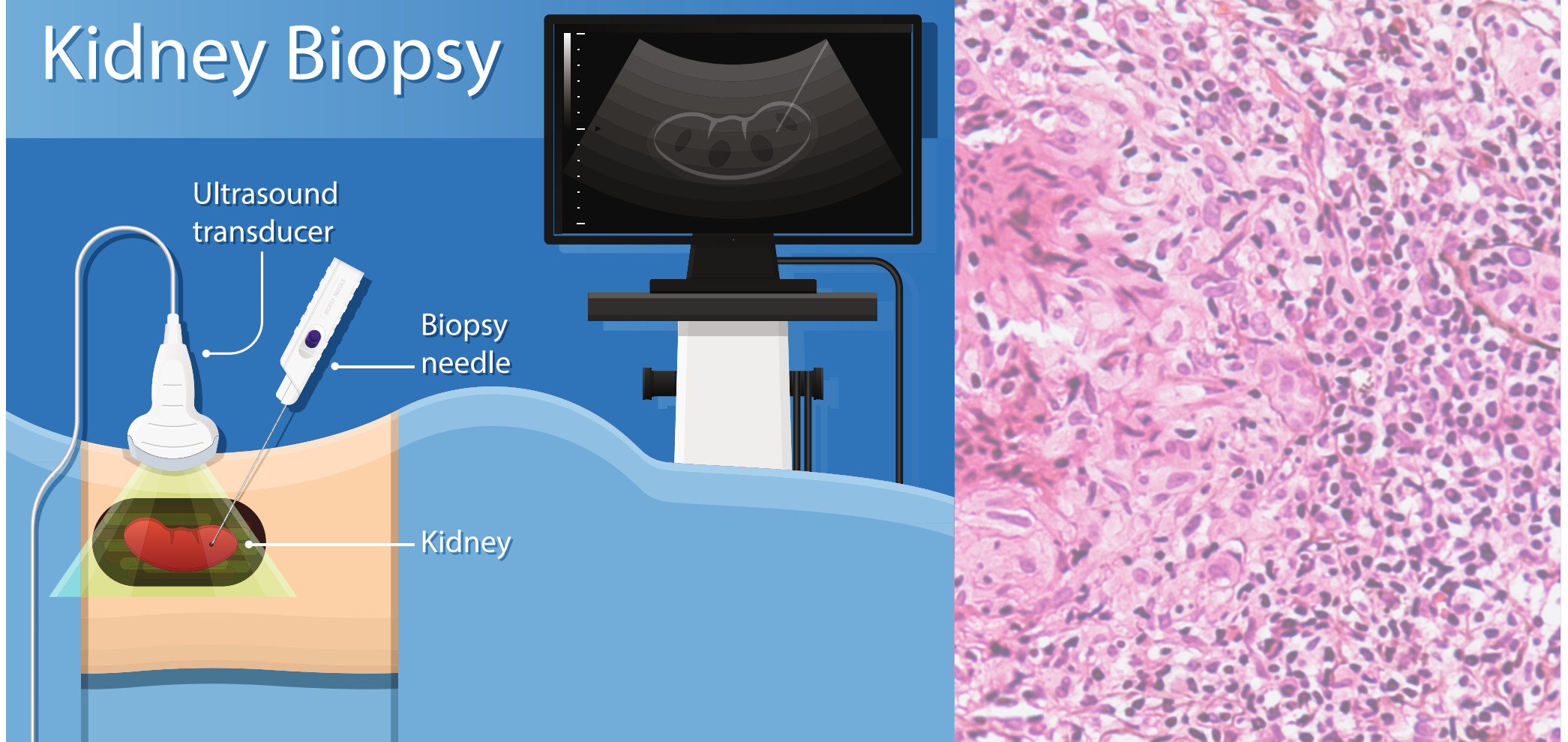


Kidney Biopsy

Kidney Biopsy



Overview:

A kidney biopsy involves taking one or more tiny samples of your kidney to look at with special microscopes. .

Preparation:

- Fasting for 4 hours is required before procedure.
- Your blood pressure should be managed to be within normal limits.
- You must reveal all medications that you currently are on to the doctor. Please inform the doctor if you are on any blood thinners which needs to be stopped at least 5 to 7 days prior to the procedure.
- Have an early light breakfast before the procedure.
- You must mandatorily undergo Prothrombin Time (PT) and Partial Prothrombin Time (APTT) blood tests before the test.

During Procedure:

- This procedure is a US guided gunshot renal biopsy and takes about 15 to 20 minutes.
- Procedure is done from back.
- You are settled comfortably in an area where your privacy is respected throughout the procedure. You will be given a hospital gown to change into.
- Local anaesthesia is given at the site of biopsy, which is usually the lower back.
- This is a day care procedure. During the procedure you will hear a sound similar to a gun-shot.

- You must lie still and not move during the procedure, to ensure the sample is collected in one attempt.
- After the procedure, Dynaplast dressing is done. You must lie still on your back, without too much of movement for 2 hours after the procedure.
- During this time, the nurse will regularly monitor your vital parameters.

Post Procedure:

- You will be observed till evening or for 6 hours, post-biopsy. If stable, you will be discharged. If there are any observations needed post biopsy, you may need to stay back overnight.
- Dynaplast dressing can be removed after 24 hours, preferably after bath.
- You must be on 24 hours bed rest post procedure.
- A prescribed renal diet needs to be followed.
- Observe for any haematuria (presence of blood in the urine). In case of haematuria, please contact your doctor immediately.
- The report will be issued in 4 to 5 working days.