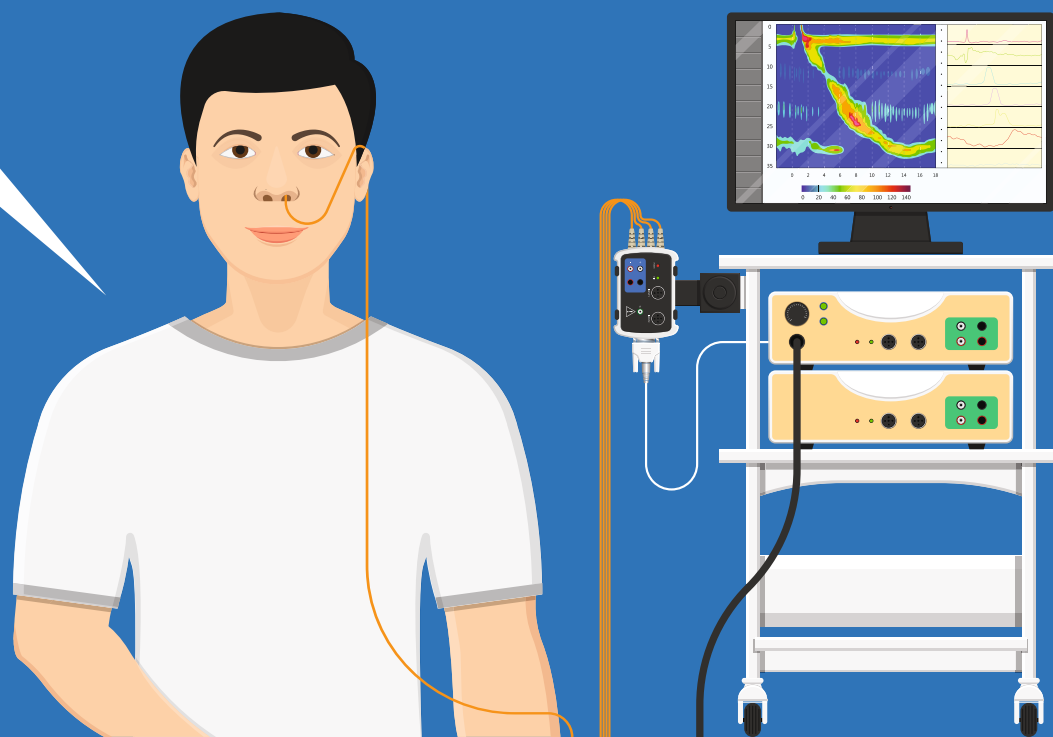
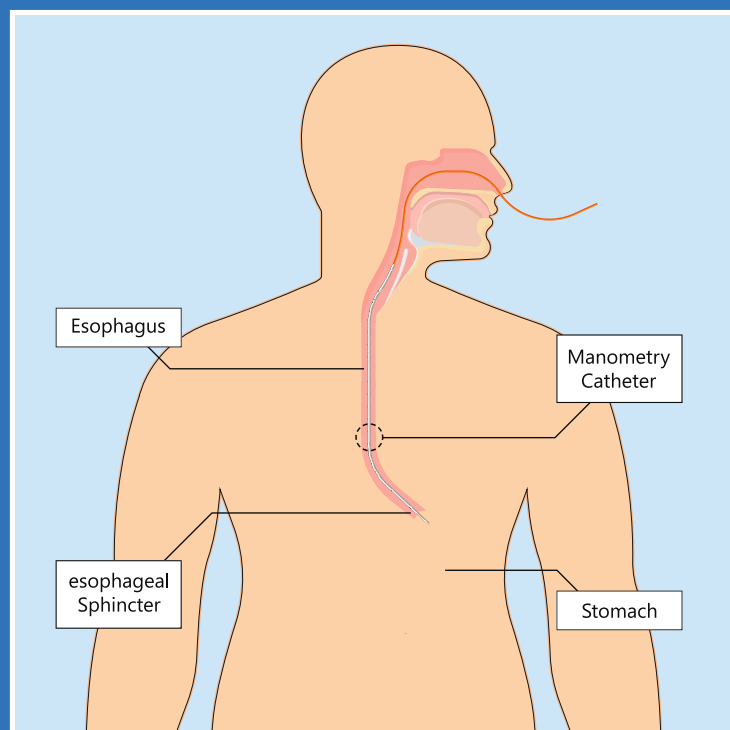


MANOMETRY



Overview:

Manometry is a test used to identify problems with movement and pressure in the oesophagus. Manometry measures the strength and muscle coordination of the oesophagus while swallowing.

Pre Procedure:

- You should be on an empty stomach with overnight or 6 to 8 hours of fasting. Post-midnight, you must not consume anything, not even water.
- You must inform the doctor about your underlying medical conditions and history.

During Procedure:

- This procedure usually takes about 15 to 30 minutes. It is performed by the treating doctor with a nurse assisting at all times.
- You will be asked to sign a consent form.
- Before the procedure, you will have to remove any jewellery or other objects that may interfere with the procedure.
- You will have to remove your eye glasses, contact lenses and dentures.
- You will be asked to change into a hospital gown.
- You are settled comfortably in an area where your privacy is respected throughout the procedure.
- While you lie in a comfortable position on your left side, the doctor will pass the

manometry probe through the nose, down the oesophagus and into the stomach. A manometry probe is a thin, pressure-sensitive tube.

- Local Anaesthetic Jelly will be applied in the nostril to reduce the discomfort.
- You may experience slight discomfort when the probe is inserted through the nose.
- You will be asked to swallow 5ml of water repeatedly to assess oesophageal motility.
- The probe is gently removed from the oesophagus and nose, once the test is completed.

Post Procedure:

- You must not consume solid food for a few hours until the swallowing reflex is normal.
- There are no dietary restrictions after a few hours post procedure and you may resume normal activities.
- Post the procedure, reports are issued after an hour.