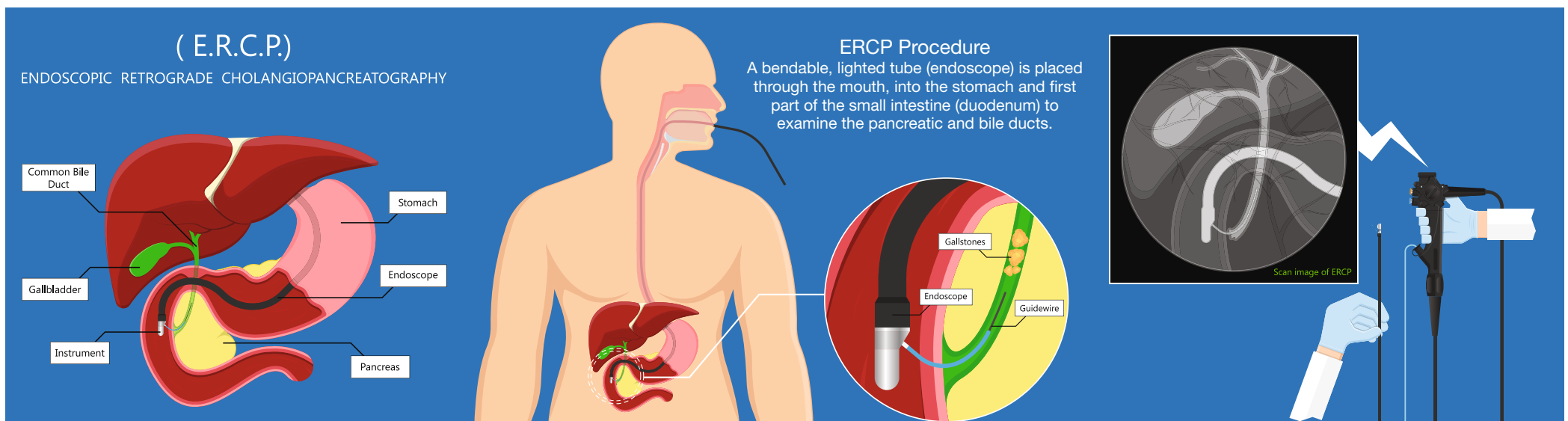


ERCP



Overview:

Endoscopic Retrograde Cholangiopancreatography or ERCP is a technique that combines the use of endoscopy and fluoroscopy to diagnose and treat certain problems of the biliary or pancreatic ductal systems.

Pre Procedure:

- You should be on an empty stomach with overnight or 6 to 8 hours of fasting. Post-midnight, you must not consume anything, not even water.
- You must inform the doctor about your underlying medical conditions and history.
- If you know or think you could be pregnant, inform your doctor.
- Procedure usually requires admission for a day for observation.
- You will be asked to sign a consent form.
- Before the procedure, you will have to remove any jewellery or other objects that may interfere with the procedure.
- You will have to remove your eye glasses, contact lenses and dentures.
- You will be asked to change into a hospital gown.
- You are settled comfortably in an area where your privacy is respected throughout the procedure.

During Procedure:

- The entire procedure usually takes about 2 to 3 hours. It is performed by the treating doctor with a nurse assisting at all times.
- A mouth guard will be placed to protect your teeth.

- A cannula is inserted for administration of IV medication and fluids.
- Anaesthesiologist will administer anaesthesia via injection or inhalation.
- While you lie in a comfortable position on your left side or prone position the doctor will place an endoscope (bendable, lighted tube) through the mouth and into the stomach and duodenum (first part of the small intestine) to examine the pancreatic and bile ducts.
- The test takes approximately 1 hour.

Post Procedure:

- After the procedure, you will be kept under observation for 1 to 2 hours in the Gastro recovery room. Your vital parameters will be checked at regular intervals during the observation period.
- The IV fluids and medication will be discontinued and cannula will be removed after the observation period.
- You must not consume water and food for a few hours until the swallowing reflex is normal.
- Your throat may feel numb and slightly sore, which is normal. This will subside after some time.
- There are no dietary restrictions after a few hours post procedure and you may resume normal activities.
- Post procedure, reports are issued after two hours.